

Conductive Super Hard Coating

Conductive hard coating technology applied to DLC - Diamond Like Carbon - technology.

Advantages of CSH Coating

- Conductive
- High hardness
- Superior abrasion resistance
- Prevent solder transfer
- Low friction coefficient

CSH coating reduces solder contamination on contact tip and the frequency of cleaning.

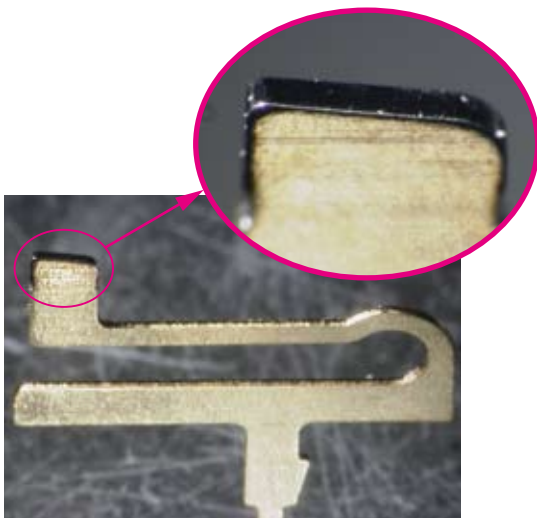
CSH coating maintains stable contact resistance and ensures high contact reliability.

Consequently, reduced down time and prolonged socket life contributes to the reduction of your total test cost.

Application of CSH Coating

CSH coating is applicable to electric contacts of burn-in socket, test socket for semiconductor and LCD panel inspection tool.

CSH Coating Surface



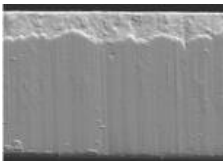
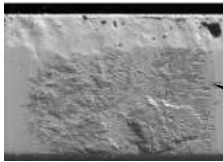
Press Contact

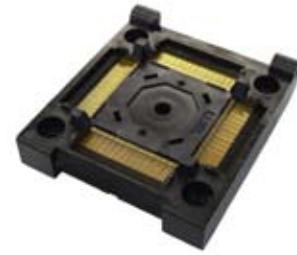


Spring Probe

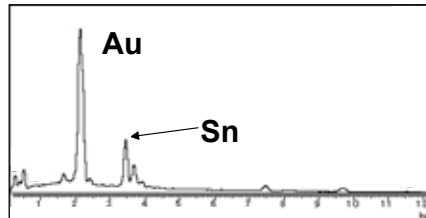
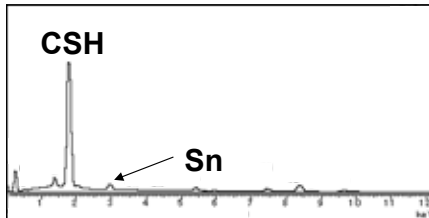
Performance of CSH™ Coating

TEST Sample : QFP TEST SOCKET

Number of Contacts	CSH Coating Contact	Gold Plating Contact
100,000		

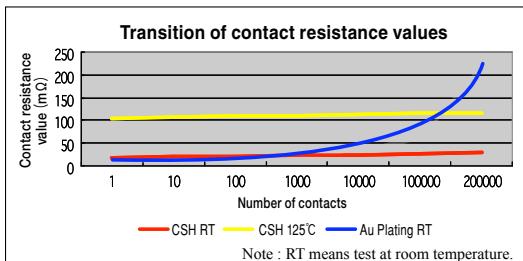


Solder



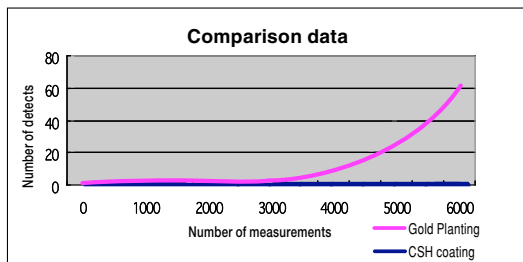
CSH coating contact has less solder adherence than general hard gold plating contact.

In-house cycle test data : Contact resistance vs. Contact cycles



Contact resistance of CSH coating contact was more stable than gold plating contact.

Comparison of actual field test data : Number of failed device vs. Test times



CSH coating contact socket reduces the number of failed device.



YAMAICHI ELECTRONICS Co.,Ltd.

3-28-7 Nakamagome, Ohta-ku, Tokyo 143-8515, Japan

Tel: +81-3-3778-6143 • Fax: +81-3-3778-6177 <http://www.yamaichi.com>

• YAMAICHI ELECTRONICS U.S.A., INC.

475 Holger Way, San Jose, CA 95134, U.S.A. Tel: +1-408-715-9100 • Fax: +1-408-715-9199 <http://www.yamaichi.us>

• YAMAICHI ELECTRONICS DEUTSCHLAND GmbH

Karl-Schmid-Strasse 9, 81829 Munich, GERMANY Tel: +49-89-45109-0 • Fax: +49-89-45109-110 <http://www.yamaichi.de>

• Yamaichi Electronics Great Britain Ltd.

Unit 4, Woodlands Business Village, Coronation Road, Basingstoke, Hampshire RG21 4JX, U.K. Tel: +44-1256-463131 • Fax: +44-1256-463132

• YAMAICHI ELECTRONICS HONG KONG LTD.

Unit 713 Tower 2 Grand Central Plaza, 138 Shatin Rural Committee Road, Shatin, N.T., HONG KONG Tel: +852-2687-1968 • Fax: +852-2601-9681 <http://www.yamaichi.com.cn>

• ASIA YAMAICHI ELECTRONICS INC.

No.505, KyungIn Bldg., 166-3, SamSeong-Dong, Gangnam-Gu, Seoul, 135-551, KOREA Tel: +82-2-557-0522 • Fax: +82-2-557-0622 <http://yamaichi.co.kr>

• YAMAICHI ELECTRONICS SINGAPORE PTE.LTD.

72 BENDEMEER Road #04-21, Luzerne, SINGAPORE 339941 Tel: +65-6297-8312 • Fax: +65-6297-8141 <http://www.yamaichi.com.sg>

• YAMAICHI ELECTRONICS TAIWAN CO., LTD.

9F-1021, No.144, Sec. 3, Min Chuan E. Road, Taipei, TAIWAN, R. O. C. Tel: +886-2-2546-0507 • Fax: +886-2-2546-0509 <http://www.yamaichi.com.cn/tw>

• TEST SOLUTION SERVICES, INC

Lot B Blk 5, CNB Street, Laguna International Industrial Park Binan, Laguna, PHILIPPINES Tel: +63-49-539-1222 • Fax: +63-49-539-1080

Specifications in this document are reference values for representative products of each series and may change without prior notice. Since product improvement entails changes to electrical, material and mechanical properties, the purchasing party is strongly encouraged to inquire about the latest specifications before placing a purchase order. All brand, product or company names may be trademarks or registered trademarks of their respective holders.