

Application



Yamaichi - High speed Data Ethernet

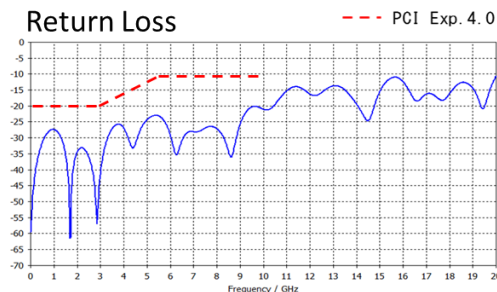
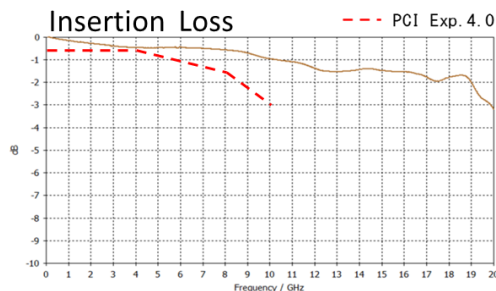
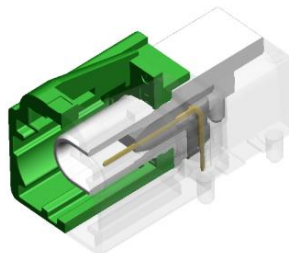
This product is a connector compatible with automotive ethernet that supports a wide range of automotive device applications.

It has high performance of data transmission and weight reduction of mechanical parts.

Feature

- Supports a wide range of applications
- Up to 20 Gbps of high-frequency
- High bit rate data transmission is possible while saving installation space and weight
- Automotive graded differential connector according LV 214 / USCAR
- Connector type : Single type or Quad type
- Coding for various connection application is available

Structure / Specification / Characteristic



Item	Specifications
Voltage Rating / 定格電圧	AC100 V rms
Current Rating / 定格電流	1.5 A DC
Operating Temp. Range / 使用温度範囲	- 40°C to +105°C (使用条件による)
Contact Resistance / 接触抵抗	Initial value Max.10 mΩ (AMP : 10mA max OCV : 20mV max)
Mating Cycles / 挿抜耐久性	Max 25 times

Product name Composition

HF116P - X001 - X X - VE

① ② ③ ④

- ① : Product name
 ② : Type (1 : Single 4 : Quad)
 ③ : Lock direction (0 : Up 1 : Down)
 ④ : Identification mating key type

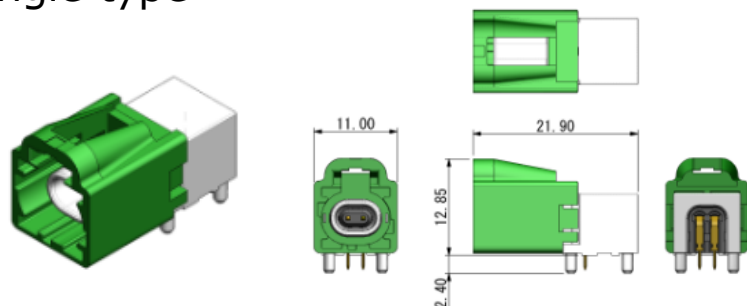
Product lineup

● Developed ○ Scheduled to be developed

Type	Specification	Lock direction	Coding													
			A	B	C	D	E	F	G	H	J	K	L	M	O	Z
Single	R/A	Up	●	●	●	●	●	●	○	○	○	○	○	○	○	●
		Down					●									●
Quad		Up	○	○	○	○	○	○	○	○	○	○	○	○	○	●

Details of specifications

Single type



Details of specifications

Quad type

